

Stephen T. Baxter, Architect, PLLC

Town of Wake Forest
Public Safety Warehouse
1412 Forestville Road, Wake Forest, NC 27587
Bid # 0007-2024

ADDENDUM #1

January 29, 2025

For
Bid Documents

All Bidders and Plan Holders

Message: Bidders are hereby informed that the following additions, deletions, changes and/or clarifications supersede and supplement the Contract Documents for the above referenced project.

General

1. The Bid Date and Time will remain February 5th, 2025 at 10:00am. Bidders are welcome to deliver sealed bids to the reception desk at Wake Forest Town Hall prior to the Bid Opening.
2. There is no stated budget for this project.
3. The Town of Wake Forest does not require a standard Bid Bond form.
4. The road improvements are a part of this project. The entire project is a Single Prime project as advertised. The General Contractor will be responsible for completion of the whole project.
5. The attached Civil Bid Form is to be submitted with Bids and unit prices and amounts filled in. Use this form instead of the form provided in the project manual. This form includes an additional page for unit prices for removal and replacement of unsuitable soils above or below the stated allowances. The additional page is to have the Alternate Unit Prices filled in.

Architectural

6. Overhead doors are to be manual operation, factory finished steel, insulated to meet a U-0.50 value for the door assembly, and 1" insulated and tempered glass in the arrangement shown on the building elevations.
7. Storefront and overhead door glazing is to be clear.
8. Window treatments are not included in the scope of work.

9. The required R-42 attic insulation may be sprayed.
10. The acoustic ceiling tile is to be Angled Tegular edge as indicated on Sheet A-2. The manufacturer is to be Armstrong or equal.
11. The interior wood sills shown on the Wall Sections are to be primed, painted, and caulked softwood.

Site

12. See the attached release for request of CAD files for the site design.
13. Dry utility relocations are by the utility providers, contractor is responsible for coordination / timing with each provider.

Mechanical

14. The main purpose of the CO detectors is for monitoring gas heaters. Detectors are to be stand alone and battery powered. See Revised Sheet M2 attached.
15. The routing of the Infrared Heater intake and exhaust ducts is through the roof per the manufacture installation instructions. Concentric vent is preferred if available for heaters selected to minimize roof penetrations. See Revised Sheet M2 attached.

Electrical

16. Site lighting is to be provided by the power company.
17. It is acceptable to install a GFCI protected breaker instead of multiple GFCI receptacles.

Fire Alarm

18. Sprinkler System Monitoring will only need one pull station at the door in the Sprinkler Riser Room. See Revised Sheet FA2 attached.

Thank you,
Stephen T. Baxter, Architect, PLLC

January 23, 2025

Subject: Town of Wake Forest – Public Safety Warehouse-Civil Drawings

To Whom It May Concern:

Pursuant to your request and in accordance with our conversation on this date, Kimley-Horn and Associates, Inc., is prepared to provide, subject to your **execution of this indemnification agreement**, a digital drawing file of the **Construction Drawings** for the above referenced project in AutoCAD 2018 format.

This information is provided solely for your convenience only; neither **Kimley-Horn nor The Town of Wake Forest**, make any representations or warranties, either express or implied, as to its suitability for any specific purpose. While we believe these drawing files to be accurate at the time of retrieval, this media and its contents can be easily altered or corrupted either purposely or inadvertently through any number of sources.

For this reason, _____, by accepting delivery hereof, **hereby agrees to indemnify and hold harmless both Kimley-Horn and the Town of Wake Forest, and their officers, directors, and employees from any and all liability that may arise or result from the use of this information by your firm, employees, agents or sub-contractors.**

This information is subject to change. Coordination for updates is the responsibility of the recipient. Kimley-Horn is not responsible to the recipient, or any other users allowed by the recipient to utilize this data, for updating the files or for compatibility with the user's hardware and/or software. It is the users' responsibility to examine the files for virus contamination, prior to use thereof.

If the above meets with your approval, please acknowledge your acceptance thereof by your execution in the space provided below and return one (1) copy to this office.

Should you have any questions or comments, please do not hesitate to contact this office.

Sincerely,

KIMLEY-HORN



John Kuzenski, P.E.

Project Manager

Accepted by _____ and intending hereby to be legally bound:

By: _____

Date: _____

Signature

Printed Name and Title

(If Corporation, affix Corporate Seal)

Bid Form

Town of Wake Forest
Public Safety Warehouse
January 24, 2025



PAY ITEM	SPEC SECTION	DESCRIPTION	UNIT	UNIT PRICE	QTY	AMOUNT
		ON-SITE PARKING LOT IMPROVEMENTS				
1	NCDOT 800	MOBILIZATION	LS		1	
2	NCDOT 801	CONSTRUCTION SURVEYING	LS		1	
3	03000 02200	SITE CLEARING AND GRUBBING	AC		0.3	
4	PSP	LANDSCAPE REMOVAL (DEMO)	LS		1	
5	PSP	CURB AND GUTTER REMOVAL (DEMO)	LF		175	
6	PSP	CONCRETE PAVEMENT REMOVAL (DEMO)	SY		725	
7	PSP	CONCRETE SIDEWALK REMOVAL (DEMO)	SY		19	
8	PSP	STORM PIPE REMOVAL-18" RCP (DEMO)	LF		212	
9	PSP	DROP INLET REMOVAL-18" RCP (DEMO)	EA		1	
10	PSP	EX FH-REMOVAL (DEMO)	EA		1	
11	11000	EX 6" DIP FIRE LINE REMOVE AND REPLACE-EX FIRE STATION	LF		60	
12	11000	EX WATER SERVICE REMOVE AND REPLACE-EX FIRE STATION	LF		35	
13	11000	REMOVE AND REPLACE EX FIRE BACKFLOW ASSEMBLY HOT BOX AND FDC-EX FIRE STATION	EA		1	
14	11000	REMOVE AND REPLACE EX DOMESTIC METER AND BACKFLOW ASSEMBLY HOT BOX-EX FIRE STATION	EA		1	
15	PSP	RELOCATE FLAGPOLES	EA		3	
16	04000 02200	SOIL IMPORT	CY		2100	
17	04000 02200	ON-SITE CUT-TO-FILL	CY		2600	
18	04000 02200	ROCK REMOVAL (MASS ROCK)	CY		100	
19	04000 02200	UNDERCUT (REMOVE AND REPLACE UNSUITABLES)	CY		200	
20	04000 02200	FINE GRADING	SY		6500	
21	PSP	MODULAR BLOCK RETAINING WALL	SF		623	
22	PSP	VEHICULAR GUARDRAIL AT RETAINING WALL	LF		115	
23	06100 02700	6" PVC ROOF DRAIN PIPE (<7-FT)	LF		185	
24	06100 02700	8" PVC ROOF DRAIN PIPE (<7-FT)	LF		150	
25	06100 02700	STORM CLEANOUTS	EA		7	
26	06000 02700	15" RCP PIPE (<7-FT)	LF		210	
27	06000 02700	15" RCP PIPE (<15-FT)	LF		95	
28	06000 02700	18" RCP PIPE (<7-FT)	LF		60	
29	06000 02700	DROP INLET (<7- FT)	EA		1	
30	06000 02700	CATCH BASINS (<7- FT)	EA		4	
31	06000 02700	CATCH BASINS (<15- FT)	EA		1	
32	06000 02700	STORM MANHOLE	EA		2	
33	06000 02700	CATCH BASIN FRAME WITH GRATE & HOOD, STD 840.03, TYPE E	EA		4	
34	06000 02700	STORM MANHOLE FRAME WITH COVER, EAST JORDAN V-1384	EA		2	
35	06000 02700	DROP INLET FRAME AND GRATE-EAST JORDAN V-4867-2	EA		1	
36	06000 02700	FLARED END SECTION-18" RCP	EA		1	
37	16000 02700	RIPRAP, CLASS B	TON		5	
38	16000	EROSION CONTROL MEASURES	LS		1	
39	PSP	STORMWATER WET POND	LS		1	
40	PSP	STORMWATER WET POND CONTROL STRUCTURE	EA		1	
41	11000	WATER SERVICE - 1.5" COPPER	LF		135	
42	11000	WATER SERVICE - 6" DIP FIRE LINE	LF		255	
43	11000	DUCTILE IRON WATER PIPE FITTINGS	LS		7	
44	11000	GATE VALVE-6"	EA		1	
45	11000	TAPPING SLEEVE AND VALVE-12" x 6"	EA		2	
46	11000	WATER METER-1.5" DOMESTIC	LS		13	
47	11000	BACKFLOW PREVENTER-FIRE LINE: 6" RPDA WITH HOT BOX AND STORZ FDC	EA		1	
48	11000	BACKFLOW PREVENTER-DOMESTIC: 1.5" DCV WITH HOT BOX	EA		1	
49	11000	FIRE HYDRANT ASSEMBLY	EA		1	
50	11000	4" PVC SANITARY SEWER	LF		155	
51	11000	SANITARY SEWER CLEANOUTS	LS		3	
52	11000	SANITARY SEWER CONNECTION TO MANHOLE	EA		1	
53	07000 02400	CONCRETE CURB AND GUTTER-24"	LF		630	
54	07000 02400	CONCRETE SIDEWALK	SY		264	
55	07000 02400	CONCRETE TRUCK PAVEMENT AREA (HEAVY DUTY-6" PCC OVER 6" ABC)	SY		875	
56	07000 02400	CONCRETE ADA RAMP (CURB RAMP)	EA		5	
57	PSP 02400	CONCRETE ADA RAMP FOR CONNECTION TO ROW	SY		41	
58	PSP 02400	ADA RAMP HANDRAILS	LF		140	
59	PSP	CAST IN PLACE RETAINING WALL FOR ADA RAMP	LF		25	
60	PSP	WHEEL STOPS	EA		2	

Bid Form

Town of Wake Forest
Public Safety Warehouse
January 24, 2025



PAY ITEM	SPEC SECTION	DESCRIPTION	UNIT	UNIT PRICE	QTY	AMOUNT
61	08000 02500 02600	STANDARD DUTY ASPHALT PAVEMENT (3" TYPE S9.5B, 6" ABC)	SY		267	
62	08000 02500 02600	HEAVY DUTY ASPHALT PAVEMENT (1.5" TYPE S9.5B, 2.5" H9.0C, 8" ABC)	SY		315	
63	PSP	BOLLARDS	EA		9	
64	PSP	BICYCLE RACKS	EA		2	
65	19000	ADA SIGNAGE	EA		2	
66	19000	STOP SIGNS	EA		2	
67	15000	PAVEMENT STRIPING-4" WHITE PARKING SPACE LINES	LF		325	
68	15000	PAVEMENT STRIPING-ADA PARKING SYMBOLS	EA		2	
69	15000	PAVEMENT STRIPING-24" STOP BAR	LF		50	
70	15000	PAVEMENT STRIPING-HI VIZ CROSSWALK MARKINGS (24" CROSSWALK LINE, 5' WIDTH)	LF		26	
71	07000 02400	ELECTRIC TRANSFORMER PAD (TRANSFORMER BY OTHERS)	EA		1	
ON-SITE PARKING LOT-LANDSCAPING						
72	PSP	STREETWISE TRIDENT MAPLE	EA		16	
73	PSP	AMERICAN HORNBEAM MULTI-TRUNK	EA		35	
74	PSP	SAVANNAH HOLLY	EA		5	
75	PSP	BRACKEN'S BEAUTY SOUTHERN MAGNOLIA	EA		23	
76	PSP	SAUCER MAGNOLIA MULTI-TRUNK	EA		9	
77	PSP	HIGHTOWER WILLOW OAK	EA		17	
78	PSP	ALLEE LACEBARK ELM	EA		9	
79	PSP	RADIANCE GLOSSY ABELIA	EA		23	
80	PSP	AUTUMN SPIRIT CAMELLIA	EA		62	
81	PSP	OCTOBER MAGIC CARPET CAMELLIA	EA		28	
82	PSP	DUKE GARDENS PLUM YEW	EA		21	
83	PSP	FROSTPROOF GARDENIA	EA		86	
84	PSP	NIGRA INKBERRY HOLLY	EA		36	
85	PSP	CRIMSON FIRE FRINGE FLOWER	EA		17	
86	PSP	BURKWOOD OSMANTHUS	EA		75	
87	PSP	NANTUCKET VIBURNUM	EA		81	
88	PSP	TIF 419 BERMUDAGRASS (SOD)	SF		29500	
89	PSP	BIG BLUE LILYTURF	EA		113	
90	PSP	PINK MUHLY GRASS	EA		16	
91	PSP	HAMELN FOUNTAIN GRASS	EA		145	
92	PSP	THREWEAY SEDGE	EA		133	
93	PSP	GOLDENCLUB	EA		84	
94	PSP	PICKEREL WEED	EA		170	
95	PSP	ARROW ARUM	EA		204	
96	PSP	BROADLEAF ARROWHEAD	EA		44	
97	PSP	DOUBLE SHREDDED HARDWOOD MULCH (3" DEPTH)	CY		470	
98	PSP	STONE MULCH (3" DEPTH)	CY		6	
99	PSP	TOPSOIL SOIL AMENDMENTS (2"-12" DEPTH)	CY		1150	
OFF-SITE ROADWAY IMPROVEMENTS						
100	03000 02200	GRADING	LS		1	
101	5000	FOUNDATION CONDITIONING MATERIAL, MINOR STRUCTURES	TON		40	
102	06000 02700	15" RC PIPE CULVERTS, CLASS IV	LF		81	
103	06000 02700	18" RC PIPE CULVERTS, CLASS IV	LF		288	
104	08000 02500 02600	MILLING ASPHALT PAVEMENT, 1 1/2" DEPTH	SY		865	
105	08000 02500 02600	ASPHALT CONC, BASE COURSE, TYPE B25.0C	TON		425	
106	08000 02500 02600	ASPHALT CONC, INTERMEDIATE COURSE, TYPE I9.0C	TON		275	
107	08000 02500 02600	ASPHALT CONC, SURFACE COURSE, TYPE S9.5C	TON		405	
108	08000 02500 02600	ASPHALT BINDER FOR PLANT MIX, GRADE PG 64-22	TON		60	
109	06000 02700	MASONRY DRAINAGE STRUCTURES	EA		5	
110	06000 02700	FRAME AND GRATES, STD. S40.03 TYPE G	EA		4	
111	06000 02700	FRAME AND GRATES, STD. S40.16	EA		1	
112	06000 02700	FLARED END SECTION-18" RCP	EA		1	
113	07000 02400	2'-6" CONCRETE CURB & GUTTER	LF		532	
114	07000 02400	4" CONCRETE SIDEWALK	SY		315	
115	07000 02400	CONCRETE CURB RAMP	EA		2	
116	07000 02400	6" CONCRETE DRIVEWAY REPLACEMENT (HEAVY DUTY-6" PCC OVER 6" ABC)	SY		575	

Bid Form

Town of Wake Forest
Public Safety Warehouse
January 24, 2025

Kimley»Horn

PAY ITEM	SPEC SECTION	DESCRIPTION	UNIT	UNIT PRICE	QTY	AMOUNT
117	16000 02700	CLASS B RIP RAP	TON		30	
118	16000 02700	GEOTEXTILE FOR DRAINAGE	SY		85	
119	19000	CONTRACTOR FURNISHED, TYPE "E" SIGN	SF		7	
120	19000	SUPPORTS, 3-1/2" STEEL U-CHANNEL	LF		45	
121	19000	SIGN ERECTION, TYPE E	EA		4	
122	NCDOT 907	DISPOSAL OF SIGN SUPPORT, U-CHANNEL	EA		3	
123	14000	TEMPORARY TRAFFIC CONTROL	LS		1	
124	15000	THERMOPLASTIC PAVEMENT MARKING LINES (4", 90 MILS)	LF		1830	
125	15000	THERMOPLASTIC PAVEMENT MARKING LINES (12", 90 MILS)	LF		320	
126	15000	THERMOPLASTIC PAVEMENT MARKING LINES (24", 90 MILS)	LF		325	
127	16000	EROSION CONTROL	LS		1	
TOTAL						

Unit Pricing

Town of Wake Forest
Public Safety Warehouse



January 24, 2025

Item	DESCRIPTION	UNIT	UNIT PRICE	ALT. UNIT PRICE
1	MASS ROCK EXCAVATION (RIPPING) AND DISPOSE ON-SITE	CY	\$20.00	
2	MASS ROCK EXCAVATION (RIPPING) AND DISPOSE OFF-SITE	CY	\$35.00	
3	MASS ROCK EXCAVATION (BLASTING) AND DISPOSE ON-SITE	CY	\$45.00	
4	MASS ROCK EXCAVATION (BLASTING) AND DISPOSE OFF-SITE	CY	\$65.00	
5	TRENCH ROCK EXCAVATION (RIPPING) AND DISPOSE ON-SITE	CY	\$25.00	
6	TRENCH ROCK EXCAVATION (RIPPING) AND DISPOSE OFF-SITE	CY	\$45.00	
7	TRENCH ROCK EXCAVATION (BLASTING) AND DISPOSE OFF-SITE	CY	\$75.00	
8	TRENCH ROCK EXCAVATION (BLASTING) AND DISPOSE OFF-SITE	CY	\$95.00	
9	EXPORT OF UNSUITABLE MATERIALS (EXCAVATION, REMOVAL AND PROPER DISPOSAL)	CY	\$20.00	
10	EXPORT OF UNSUITABLE SOILS (TOPSOIL OR OTHER)	CY	\$18.00	
11	STOCKPILE ON-SITE (EXCAVATION, LOAD, HAUL AND STOCKPILE)	CY	\$5.00	
12	IMPORT, PLACE AND COMPACT STRUCTURAL FILL DUE TO EXPORT OF UNSUITABLE MATERIALS)	CY	\$18.00	
13	IMPORT PLACE AND COMPACT ABC STONE	TON	\$30.00	
14	IMPORT AND PLACE #5" STONE	TON	\$40.00	
15	RELOCATE SECTION OF 12" WATER LINE IN ROW DUE TO CONFLICT WITH ROADWAY IMPROVEMENTS	LF	\$100.00	

Notes:

- 1. If Unforeseen conditions are encountered during construction; Contractor shall utilize unit prices as above or specify appropriate alternate unit prices during bid phase
- 2. Unit prices shall be agreed upon during the Bid Phase and shall not be exceeded under any circumstances during Construction Phase

Bid Form

Town of Wake Forest
Public Safety Warehouse
January 24, 2025



PAY ITEM	SPEC SECTION	DESCRIPTION	UNIT	UNIT PRICE	QTY	AMOUNT
		ON-SITE PARKING LOT IMPROVEMENTS				
1	NC DOT 800	MOBILIZATION	LS		1	
2	NC DOT 801	CONSTRUCTION SURVEYING	LS		1	
3	03000/02200	SITE CLEARING AND GRUBBING	AC		0.3	
4	PSP	LANDSCAPE REMOVAL (DEMO)	LS		1	
5	PSP	CURB AND GUTTER REMOVAL (DEMO)	LF		175	
6	PSP	CONCRETE PAVEMENT REMOVAL (DEMO)	SY		725	
7	PSP	CONCRETE SIDEWALK REMOVAL (DEMO)	SY		19	
8	PSP	STORM PIPE REMOVAL-18" RCP (DEMO)	LF		212	
9	PSP	DROP INLET REMOVAL-18" RCP (DEMO)	EA		1	
10	PSP	EX FH-REMOVAL (DEMO)	EA		1	
11	11000	EX 6" DIP FIRE LINE REMOVE AND REPLACE-EX FIRE STATION	LF		60	
12	11000	EX WATER SERVICE REMOVE AND REPLACE-EX FIRE STATION	LF		35	
13	11000	REMOVE AND REPLACE EX FIRE BACKFLOW ASSEMBLY/HOT BOX AND FDC-EX FIRE STATION	EA		1	
14	11000	REMOVE AND REPLACE EX DOMESTIC METER AND BACKFLOW ASSEMBLY/HOT BOX-EX FIRE STATION	EA		1	
15	PSP	RELOCATE FLAGPOLES	EA		3	
16	04000/02200	SOIL IMPORT	CY		2100	
17	04000/02200	ON-SITE CUT-TO-FILL	CY		2600	
18	04000/02200	ROCK REMOVAL (MASS ROCK)	CY		100	
19	04000/02200	UNDERCUT (REMOVE AND REPLACE UNSUITABLES)	CY		260	
20	04000/02200	FINE GRADING	SY		6500	
21	PSP	MODULAR BLOCK RETAINING WALL	SF		623	
22	PSP	VEHICULAR GUARDRAIL AT RETAINING WALL	LF		115	
23	06100/02700	6" PVC ROOF DRAIN PIPE (<7-FT)	LF		185	
24	06100/02700	8" PVC ROOF DRAIN PIPE (<7-FT)	LF		150	
25	06100/02700	STORM CLEANOUTS	EA		7	
26	06000/02700	15" RCP PIPE (<7-FT)	LF		210	
27	06000/02700	15" RCP PIPE (<15-FT)	LF		95	
28	06000/02700	18" RCP PIPE (<7-FT)	LF		60	

Bid Form

Town of Wake Forest
Public Safety Warehouse
January 24, 2025



PAY ITEM	SPEC SECTION	DESCRIPTION	UNIT	UNIT PRICE	QTY	AMOUNT
29	06000/02700	DROP INLET (<7- FT)	EA		1	
30	06000/02700	CATCH BASINS (<7- FT)	EA		4	
31	06000/02700	CATCH BASINS (<15- FT)	EA		1	
32	06000/02700	STORM MANHOLE	EA		2	
33	06000/02700	CATCH BASIN FRAME WITH GRATE & HOOD, STD 840.03, TYPE I	EA		4	
34	06000/02700	STORM MANHOLE FRAME WITH COVER, EAST JORDAN V-1384	EA		2	
35	06000/02700	DROP INLET FRAME AND GRATE-EAST JORDAN V-4867-2	EA		1	
36	06000/02700	FLARED END SECTION-18" RCP	EA		1	
37	16000/02700	RIPRAP, CLASS B	TON		5	
38	16000	EROSION CONTROL MEASURES	LS		1	
39	PSP	STORMWATER WET POND	LS		1	
40	PSP	STORMWATER WET POND CONTROL STRUCTURE	EA		1	
41	11000	WATER SERVICE - 1.5" COPPER	LF		135	
42	11000	WATER SERVICE - 6" DIP FIRE LINE	LF		255	
43	11000	DUCTILE IRON WATER PIPE FITTINGS	LS		1	
44	11000	GATE VALVE-6"	EA		1	
45	11000	TAPPING SLEEVE AND VALVE-12" x 6"	EA		2	
46	11000	WATER METER-1.5" DOMESTIC	LS		13	
47	11000	BACKFLOW PREVENTER-FIRE LINE; 6" RPDA WITH HOT BOX AND STORZ FDC	EA		1	
48	11000	BACKFLOW PREVENTER-DOMESTIC; 1.5" DCV WITH HOT BOX	EA		1	
49	11000	FIRE HYDRANT ASSEMBLY	EA		1	
50	11000	4" PVC SANITARY SEWER	LF		155	
51	11000	SANITARY SEWER CLEANOUTS	LS		3	
52	11000	SANITARY SEWER CONNECTION TO MANHOLE	EA		1	
53	07000/02400	CONCRETE CURB AND GUTTER-24"	LF		630	
54	07000/02400	CONCRETE SIDEWALK	SY		264	
55	07000/02400	CONCRETE TRUCK PAVEMENT AREA (HEAVY DUTY-6" PCC OVER 6" ABC)	SY		875	
56	07000/02400	CONCRETE ADA RAMP (CURB RAMP)	EA		5	
57	PSP/02400	CONCRETE ADA RAMP FOR CONNECTION TO ROW	SY		41	

Bid Form

Town of Wake Forest
Public Safety Warehouse

January 24, 2025



PAY ITEM	SPEC SECTION	DESCRIPTION	UNIT	UNIT PRICE	QTY	AMOUNT
58	PSP/02400	ADA RAMP HANDRAILS	LF		140	
59	PSP	CAST IN PLACE RETAINING WALL FOR ADA RAMP	LF		25	
60	PSP	WHEEL STOPS	EA		2	

Bid Form

Town of Wake Forest
Public Safety Warehouse
January 24, 2025



PAY ITEM	SPEC SECTION	DESCRIPTION	UNIT	UNIT PRICE	QTY	AMOUNT
61	08000/02500/02600	STANDARD DUTY ASPHALT PAVEMENT (3" TYPE S9.5B, 6" ABC)	SY		267	
62	08000/02500/02600	HEAVY DUTY ASPHALT PAVEMENT (1.5" TYPE S9.5B, 2.5" H19.0C, 8" ABC)	SY		315	
63	PSP	BOLLARDS	EA		9	
64	PSP	BICYCLE RACKS	EA		2	
65	19000	ADA SIGNAGE	EA		2	
66	19000	STOP SIGNS	EA		2	
67	15000	PAVEMENT STRIPING-4" WHITE PARKING SPACE LINES	LF		335	
68	15000	PAVEMENT STRIPING-ADA PARKING SYMBOLS	EA		2	
69	15000	PAVEMENT STRIPING-24" STOP BAR	LF		50	
70	15000	PAVEMENT STRIPING-HI VIZ CROSSWALK MARKINGS (24" CROSSWALK LINE, 5' WIDTH)	LF		26	
71	07000/02400	ELECTRIC TRANSFORMER PAD (TRANSFORMER BY OTHERS)	EA		1	
		ON-SITE PARKING LOT-LANDSCAPING				
72	PSP	STREETWISE TRIDENT MAPLE	EA		16	
73	PSP	AMERICAN HORNBEAM MULTI-TRUNK	EA		35	
74	PSP	SAVANNAH HOLLY	EA		5	
75	PSP	BRACKENS BEAUTY SOUTHERN MAGNOLIA	EA		23	
76	PSP	SAUCER MAGNOLIA MULTI-TRUNK	EA		9	
77	PSP	HIGHTOWER WILLOW OAK	EA		17	
78	PSP	ALLEE LACEBARK ELM	EA		9	
79	PSP	RADIANCE GLOSSY ABELIA	EA		23	
80	PSP	AUTUMN SPIRIT CAMELLIA	EA		62	
81	PSP	OCTOBER MAGIC CARPET CAMELLIA	EA		28	
82	PSP	DUKE GARDENS PLUM YEW	EA		21	
83	PSP	FROSTPROOF GARDENIA	EA		86	
84	PSP	NIGRA INKBERRY HOLLY	EA		36	
85	PSP	CRIMSON FIRE FRINGE FLOWER	EA		17	
86	PSP	BURKWOOD OSMANTHUS	EA		75	
87	PSP	NANTUCKET VIBURNUM	EA		81	
88	PSP	TIP-419 BERMUDDAGRASS (SOD)	SF		29500	

Bid Form

Town of Wake Forest
Public Safety Warehouse
January 24, 2025



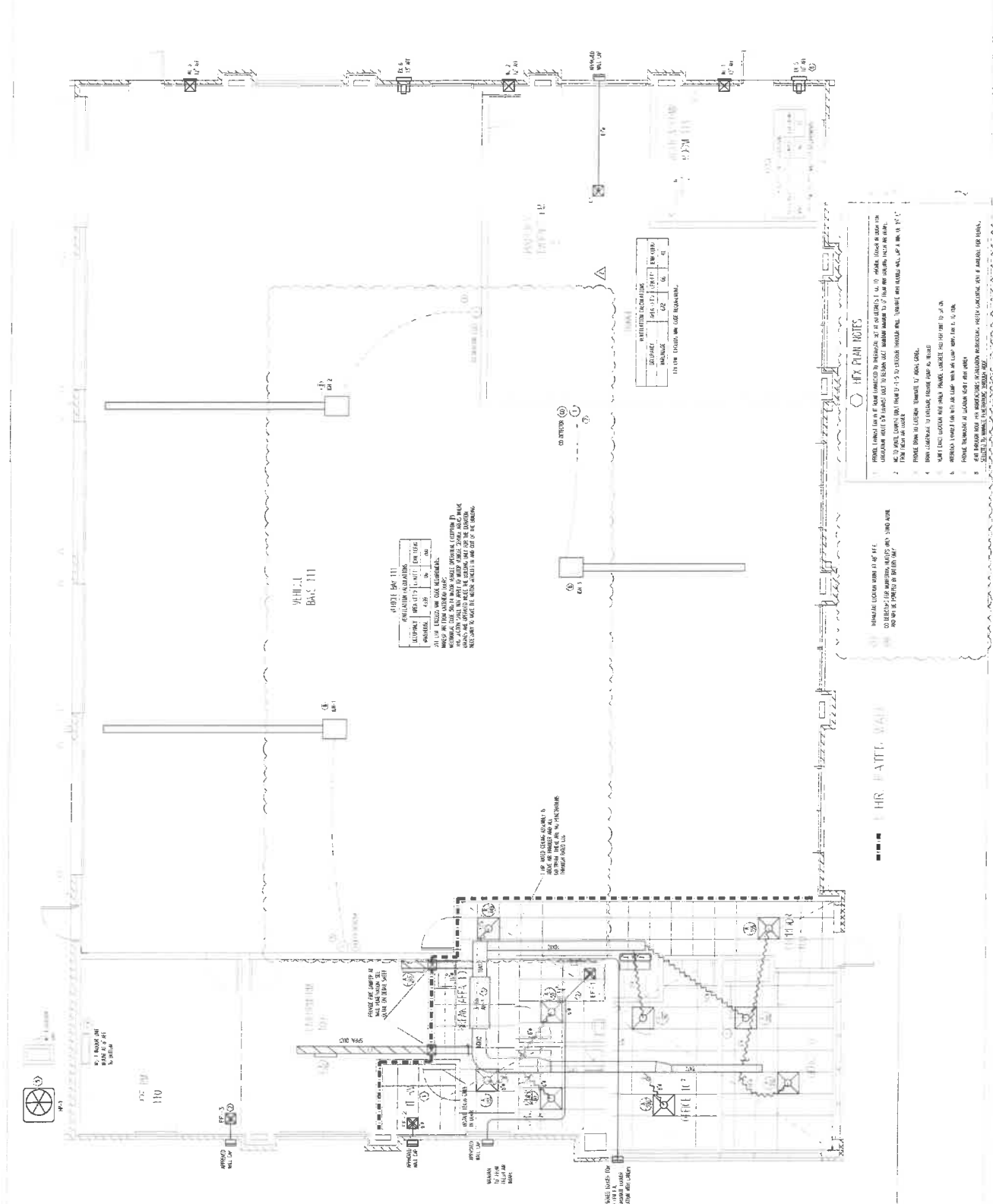
PAY ITEM	SPEC SECTION	DESCRIPTION	UNIT	UNIT PRICE	QTY	AMOUNT
89	PSP	BIG BLUE LILY TURF	EA		113	
90	PSP	PINK MUHLY GRASS	EA		16	
91	PSP	HAMELN FOUNTAIN GRASS	EA		145	
92	PSP	THREWAY SEDGE	EA		133	
93	PSP	GOLDENCLUB	EA		84	
94	PSP	PICKEREL WEED	EA		170	
95	PSP	ARROW ARUM	EA		204	
96	PSP	BROADLEAF ARROWHEAD	EA		44	
97	PSP	DOUBLE SHREDDED HARDWOOD MULCH (3" DEPTH)	CY		470	
98	PSP	STONE MULCH (3" DEPTH)	CY		6	
99	PSP	TOPSOIL / SOIL AMENDMENTS (2"-12" DEPTH)	CY		1150	
OFF-SITE ROADWAY IMPROVEMENTS						
100	03000/02200	GRADING	LS		1	
101	5000	FOUNDATION CONDITIONING MATERIAL, MINOR STRUCTURES	TON		40	
102	06000/02700	15" RC PIPE CULVERTS, CLASS IV	LF		81	
103	06000/02700	18" RC PIPE CULVERTS, CLASS IV	LF		288	
104	08000/02500/02600	MILLING ASPHALT PAVEMENT, 1 1/2" DEPTH	SY		865	
105	08000/02500/02600	ASPHALT CONC. BASE COURSE, TYPE B25.0C	TON		425	
106	08000/02500/02600	ASPHALT CONC. INTERMEDIATE COURSE, TYPE 19.0C	TON		275	
107	08000/02500/02600	ASPHALT CONC. SURFACE COURSE, TYPE S9.5C	TON		405	
108	08000/02500/02600	ASPHALT BINDER FOR PLANT MIX, GRADE PG 64-22	TON		60	
109	06000/02700	MASONRY DRAINAGE STRUCTURES	EA		5	
110	06000/02700	FRAME AND GRATES, STD. 840.03 TYPE G	EA		4	
111	06000/02700	FRAME AND GRATES, STD. 840.16	EA		1	
112	06000/02700	FLARED END SECTION-18" RCP	EA		1	
113	07000/02400	2'-6" CONCRETE CURB & GUTTER	LF		532	
114	07000/02400	4" CONCRETE SIDEWALK	SY		315	
115	07000/02400	CONCRETE CURB RAMP	EA		2	
116	07000/02400	6" CONCRETE DRIVEWAY REPLACEMENT (HEAVY DUTY-6" PCC OVER 6" ABC)	SY		575	

Bid Form

Town of Wake Forest
Public Safety Warehouse
January 24, 2025



PAY ITEM	SPEC SECTION	DESCRIPTION	UNIT	UNIT PRICE	QTY	AMOUNT
117	16000/02700	CLASS B RIP RAP	TON		30	
118	16000/02700	GEOTEXTILE FOR DRAINAGE	SY		85	
119	19000	CONTRACTOR FURNISHED, TYPE "E" SIGN	SF		7	
120	19000	SUPPORTS, 3-LB STEEL U-CHANNEL	LF		45	
121	19000	SIGN ERECTION, TYPE E	EA		4	
122	NC DOT 907	DISPOSAL OF SIGN SUPPORT, U-CHANNEL	EA		3	
123	14000	TEMPORARY TRAFFIC CONTROL	LS		1	
124	15000	THERMOPLASTIC PAVEMENT MARKING LINES (4", 90 MILS)	LF		1830	
125	15000	THERMOPLASTIC PAVEMENT MARKING LINES (12", 90 MILS)	LF		320	
126	15000	THERMOPLASTIC PAVEMENT MARKING LINES (24", 90 MILS)	LF		325	
127	16000	EROSION CONTROL	LS		1	
		TOTAL				



EXHAUST CALCULATIONS

ROOM	AREA (SQ. FT.)	CEILING HEIGHT (FT.)	EXH. RATE (CFM)
MECH. ROOM	100	10	1000
ELECT. ROOM	100	10	1000
BASE 111	100	10	1000

HEX PLAN NOTES

NO.	DESCRIPTION
1	HEX PLAN NOTES
2	HEX PLAN NOTES
3	HEX PLAN NOTES
4	HEX PLAN NOTES
5	HEX PLAN NOTES
6	HEX PLAN NOTES
7	HEX PLAN NOTES
8	HEX PLAN NOTES
9	HEX PLAN NOTES
10	HEX PLAN NOTES

- HEX PLAN NOTES**
1. PROVIDE EXHAUST FROM MECHANICAL ROOMS TO EXTERIOR THROUGH ROOF WITH 1" MIN. CLEARANCE FROM ROOF.
 2. PROVIDE EXHAUST FROM ELECTRICAL ROOMS TO EXTERIOR THROUGH ROOF WITH 1" MIN. CLEARANCE FROM ROOF.
 3. PROVIDE EXHAUST FROM BASE 111 TO EXTERIOR THROUGH ROOF WITH 1" MIN. CLEARANCE FROM ROOF.
 4. PROVIDE EXHAUST FROM MECH. ROOMS TO EXTERIOR THROUGH ROOF WITH 1" MIN. CLEARANCE FROM ROOF.
 5. PROVIDE EXHAUST FROM ELECTRICAL ROOMS TO EXTERIOR THROUGH ROOF WITH 1" MIN. CLEARANCE FROM ROOF.
 6. PROVIDE EXHAUST FROM BASE 111 TO EXTERIOR THROUGH ROOF WITH 1" MIN. CLEARANCE FROM ROOF.
 7. PROVIDE EXHAUST FROM MECH. ROOMS TO EXTERIOR THROUGH ROOF WITH 1" MIN. CLEARANCE FROM ROOF.
 8. PROVIDE EXHAUST FROM ELECTRICAL ROOMS TO EXTERIOR THROUGH ROOF WITH 1" MIN. CLEARANCE FROM ROOF.
 9. PROVIDE EXHAUST FROM BASE 111 TO EXTERIOR THROUGH ROOF WITH 1" MIN. CLEARANCE FROM ROOF.
 10. PROVIDE EXHAUST FROM MECH. ROOMS TO EXTERIOR THROUGH ROOF WITH 1" MIN. CLEARANCE FROM ROOF.

MECHANICAL PLAN SCALE: 1/4"=1'-0"

